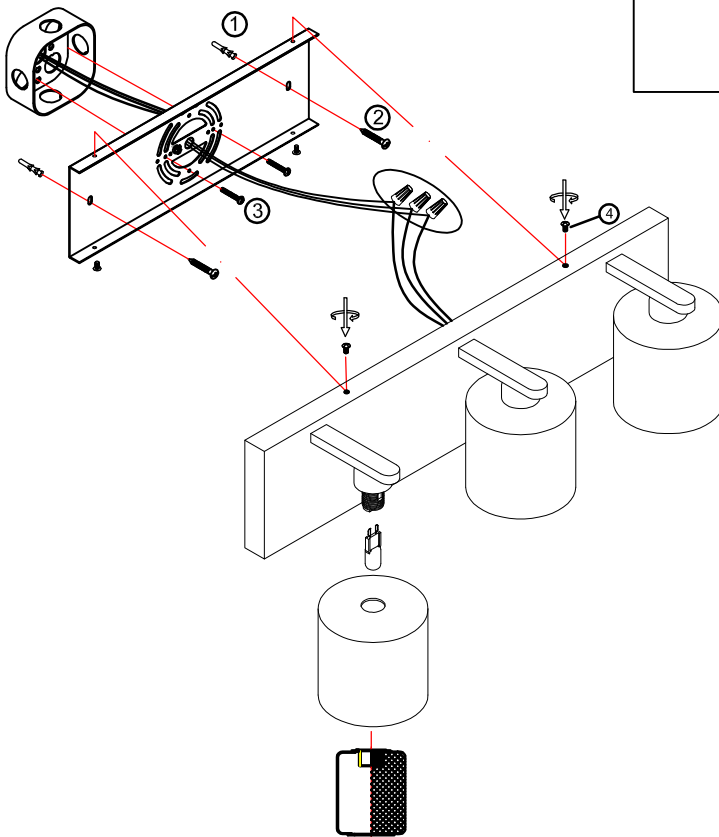
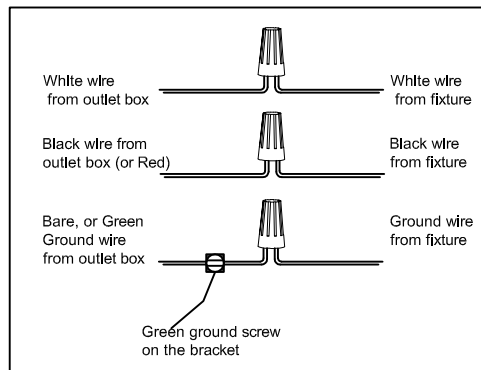


# INSTRUCTION MANUAL

- 1. Always ensure the power is completely OFF before any installation or maintenance.**
- 2. The fixture must be installed by a qualified licensed electrician**



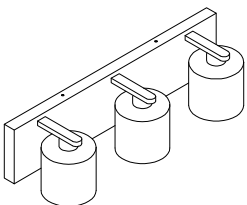
**1. Ensure main supply is switched off.**

**2. Put the anchoring (1) into the hole on the wall, have the screw (2) through the mounting bracket, and tighten with anchoring.**

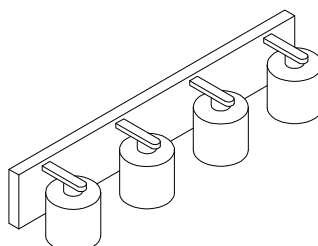
**3. Have the mounting screw (3) through the mounting bracket and screw into octagon box.**

**4. Connect the wires using wire nuts, tight mounting bracket and back plate using screws (4).**

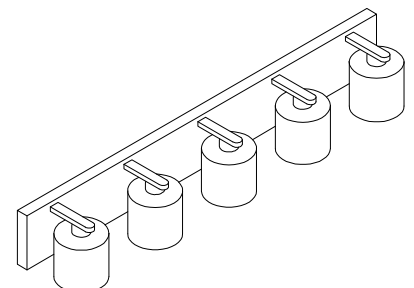
**5. Install the light bulb (not provided) to the socket, put glass shade to the socket. Use net shade to secure it.**



**VL2123-3**



**VL2123-4**



**VL2123-5**