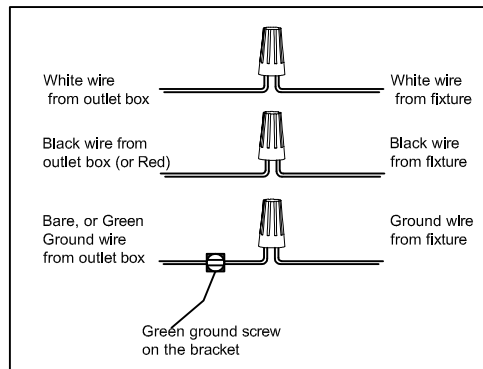
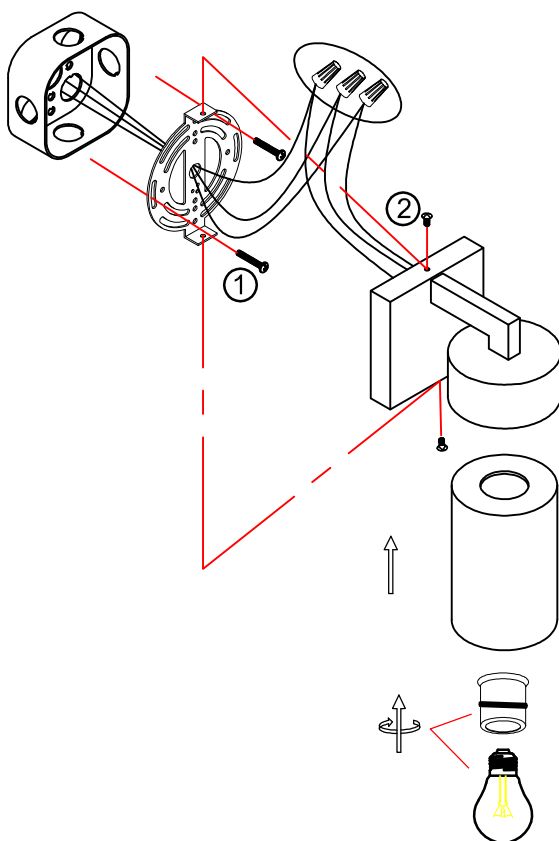
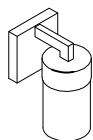


# INSTRUCTION MANUAL

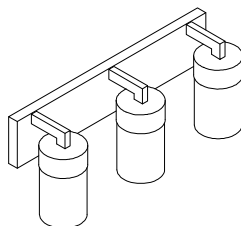
1. **ALways enure the power is completely OFF before any installation or maintenance.**
2. **The fixture must be installed by a qualified licensed electrician**



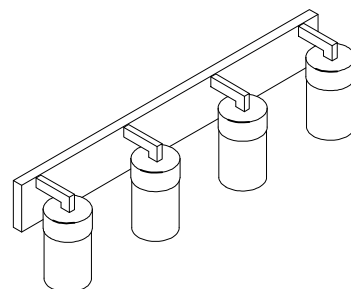
1. **Ensure main supply is switched off.**
2. **Have the mounting screw (1) through the mounting bracket and screw into octagon box.**
3. **Connect the wires using wire nuts, tight mounting bracket and back plate using screws (2).**
4. **Place the glass on the socket and lock the glass in place with the socket ring.**
5. **Install the bulb (not included) into socket.**



**WS705-1BK  
WS705-1AB/BK  
WS705-1AB**



**VL705-3BK  
VL705-3AB/BK  
VL705-3AB**



**VL705-4BK  
VL705-4AB/BK  
VL705-4AB**